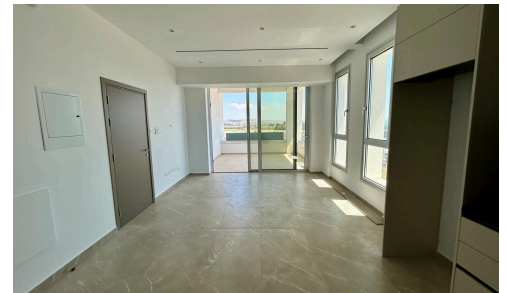
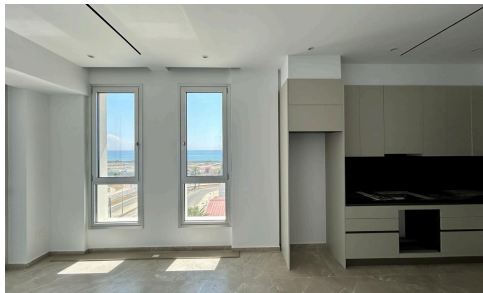
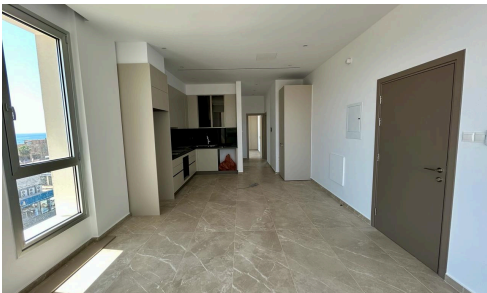


#5942



Whole Floor Two Bedroom Penthouse With Sea View For Sale In Larnaca Port Area

€540,000 +VAT

 Larnaca - Port Area, Larnaca

Discover this exceptional whole-floor penthouse located near the port area in Larnaca, offering breathtaking unobstructed sea views and a prime location right next to the highly anticipated Land of Tomorrow project — an outstanding opportunity for both homeowners and investors seeking strong future capital appreciation.

This brand new, key-ready two-bedroom penthouse features a bright and spacious open-plan kitchen and living area, designed with modern living in mind and enhanced by large windows that allow plenty of natural light throughout

Bedrooms

 2

Bathrooms

 2

Covered


 75 m²

Energy efficiency rating

 A+



Dragomir Stanchev

 (+357) 25010024

 dragomir.s@propwellgroup.com

