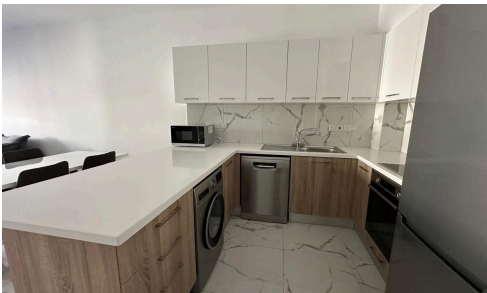



#5213



Brand-New Two Bedroom Luxury Apartment, Salamina Area, Larnaca, Cyprus

€1,200 /month

 Larnaca - Salamina Area, Larnaca

This apartment is located at a central residential highly desirable area of Larnaca. The apartment is near Salamina stadium.

The generously proportioned open plan apartment has finished to an exceptionally high standard and its own private covered balcony and is located on the 1st floor of the building.

Bedrooms

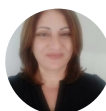
 2

Covered


 82 m²

Energy efficiency rating

 A



Maria Georgiou

 (+357) 24000012

 m.georgiou@propwellgroup.com

