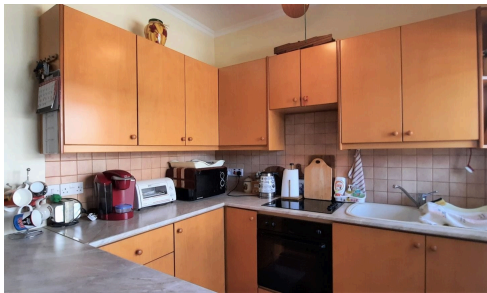


#4539



Excellent Condition Two Bedroom House, Pyla Village, Cyprus

€110,000

 Pyla, Larnaca

This two bedroom house is located at Pyla Village, with easy access to the motorway and beach. Internally it comprises of an open space living room/dining area, an open space kitchen with a breakfast bar, guest W.C. and exit to a front uncovered veranda with view to the green space of the complex. Access to the 1st floor is made through an internal staircase and comprises of a main bathroom/W.C. and two bedrooms with the master bedroom having an exit to a covered veranda with distant view to the sea and view to the green space of the complex. There is also access to an attic through an extended staircase which comprises of a usable storage area.

Bedrooms

 2

Bathrooms

 1

Covered

 84 m²

Energy efficiency rating

 B